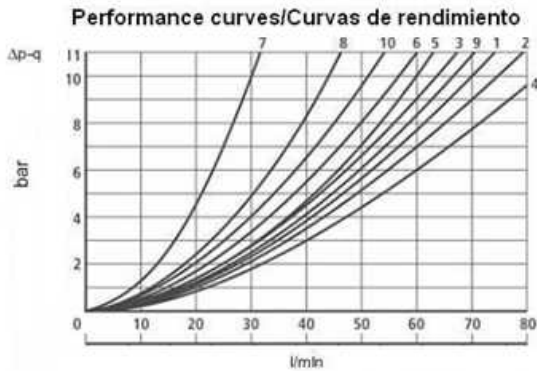
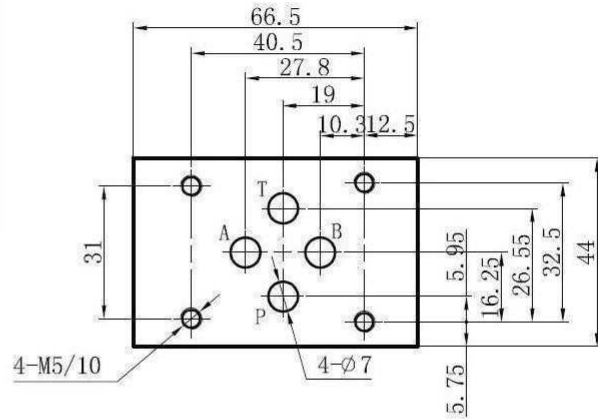
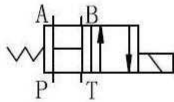


Solenoid valves

Solenoid valve NG6

Solenoid valve NG6 - Spool n°3B

Page: 1/1



Spool / Corredera	Flow path / Trayectoria flujo			
	P-A	P-B	A-T	B-T
1	3	3	1	1
2	6	6	9	9
3	2	4	2	2
6	1	1	2	1
3A	-	4	2	-
41A	3	3	-	-
51A	1	1	3	1

- Electric Connectors** with LED
- 4 Screw Set Included** M5x45
- Operating Pressure**
 - A, B, P ports: 315 bar
 - T port: 160 bar

Part n°	Size	Voltage (V)	Max. flow (l/min)	Max. Press. (bar)	f (Hz)
KVNG6-3B-24CC H	NG-6	24 VDC	60	315	
KVNG6-3B-220CA H	NG-6	220 VAC	60	315	50

*** Review attached PDF***